

## BLAZE KNIT LOW S1P HRO SRC

Art. No. 64.306.0



- Protección:** Puntera de fibra de vidrio y protección flexible antiperforación FAP®
- Plus:** protección de TPU en la puntera, sin componentes metálicos, DGVU 112-191
- Empeine:** SAFETY KNIT®
- Forro:** BreathActive forro técnico
- Plantilla:** evercushion® CUSTOM FIT MID
- Suela:** suela de goma URBAN con idCELL y punto de rotación, capaz de resistir hasta 300 °C de temperatura
- Color:** Azul
- Tallas:** 39 - 47



### SUELA DE GOMA URBAN

This 300° C heat resistant HRO rubber outsole with its differently shaped profile elements offers optimal mobility and safe contact with the ground. Due to the increase of the rotation point, friction and thus tiredness can be significantly reduced.



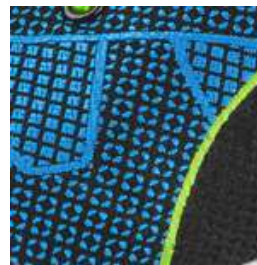
### idCELL

Los elementos idCELL de la zona del talón y el antepié están compuestos por goma EVA, un material muy ligero, y absorben perfectamente los impactos y golpes que se producen cuando el pie toca el suelo.



### evercushion® CUSTOM FIT MID

The anatomically shaped evercushion® CUSTOM FIT MID footbed provides optimal cushioning with every step. The specially fitted arch support enables the natural positioning of the foot in the shoe and stimulates the muscles when walking. Also available in the retail pack in the Versions LOW and HIGH, for narrow ones or wide feet.



### SAFETY KNIT®

STEP IN COMFORT - The ultraflexible textile fabric perfectly adapts to the foot and fits like a sock. The upper SAFETY KNIT®, a mixture of high quality synthetic fibres, offers a high flexibility, resistance and breathability at the same time.